

Ruijie Network

Innovation Beyond Networks



The background of the slide features a composite image. The top half shows a bright, hazy sky with a sunburst effect. The bottom half shows a dense urban skyline at dusk or dawn. On the right side, a large, curved architectural structure with a repeating diamond-shaped pattern, resembling a modern building facade, curves upwards from the city towards the sky.

We ONLY do **WIN-WIN** business

Gartner Recognition (2020)

Magic Quadrant for the Wired and Wireless LAN Access Infrastructure

Top 10 Vendor Globally

Has been recognised in the

GARTNER

Magic Quadrant

Aggressive Cloud Management Strategy with Advanced Network Technologies and Strong Focus in the key Vertical Market



Leading Vendor in China

In 2019

- Rank 2nd in China Enterprise Wi-Fi market
- Rank 3rd in China Ethernet Switch market

IDC China
801 Tower E, Global Trade Center
No. 36 North 3rd Ring Road, Dongcheng District
Beijing, China, 100013
Tel: +86 10 5880 1888
www.idc.com.cn

Authorization for the Use of IDC Data

In the absence of prior written consent, the IDC name, logo, trademarks or copyrighted information cannot be used in promotional materials, publicity releases, advertising, or any other similar publications or communications, whether oral or written.
Please consider this letter as written authorization for the following company to use the below IDC data for the stated purpose only. However please note that the below data will be expired by a approval from IDC. Any deletion, addition, or other changes to the below quote should be submitted to IDC for confirmation again.

Company Authorized: Ruijie
Department: Branding
Contact person: Xiao Yanni
Tel: 010-51710279
Fax: 8610-51413399
Email: xiaoyanni@ruijie.com.cn
Address: 11/F, East Wing, ZhongYIPengao Plaza, No. 29 Fuxing Road, Haidian District, Beijing 100036, China

IDC Data Will be Used for: Bidding

Source of Data:
IDC PRC WLAN Tracker, 2019 Q4

Expiry Date: The use of the below approved data will be expired in three months from the date of this authorization, or need to be replaced when the next updated version is available.

Approved IDC's Data / Quotes:

Ruijie in China Market

Calendar Year	Market	Vendor Revenue (Million USD)	Market Share (By Vendor Revenue)
2019	WLAN	162.0	19.2%

* Disclaimer: IDC is not responsible for any damage or loss resulting from the use of the information, regardless of the circumstances, suffered or incurred as a result of any party pertaining to that use.

IDC China
801 Tower E, Global Trade Center
No. 36 North 3rd Ring Road, Dongcheng District
Beijing, China, 100013
Tel: +86 10 5880 1888
www.idc.com.cn

Authorization for the Use of IDC Data

In the absence of prior written consent, the IDC name, logo, trademarks or copyrighted information cannot be used in promotional materials, publicity releases, advertising, or any other similar publications or communications, whether oral or written.
Please consider this letter as written authorization for the following company to use the below IDC data for the stated purpose only. However please note that the below data will be expired by a approval from IDC. Any deletion, addition, or other changes to the below quote should be submitted to IDC for confirmation again.

Company Authorized: Ruijie
Department: Branding
Contact person: Xiao Yanni
Tel: 010-51710279
Fax: 8610-51413399
Email: xiaoyanni@ruijie.com.cn
Address: 11/F, East Wing, ZhongYIPengao Plaza, No. 29 Fuxing Road, Haidian District, Beijing 100036, China

IDC Data Will be Used for: Bidding

Source of Data:
IDC PRC Ethernet Switch Tracker, 2019Q4

Expiry Date: The use of the below approved data will be expired in three months from the date of this authorization, or need to be replaced when the next updated version is available.

Approved IDC's Data / Quotes:

Ruijie in China Market

Calendar Year	Market	Vendor Revenue (Million USD)	Market Share (By Vendor Revenue)
2019	Datacenter Switch	11.0	3.1%

* Disclaimer: IDC is not responsible for any damage or loss resulting from the use of the information, regardless of the circumstances, suffered or incurred as a result of any party pertaining to that use.

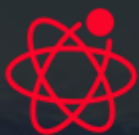
Managing Director, IDC China
2020 Apr 17th

We are **Fast** Growing

A stylized world map is centered in the background, rendered in white against a dark blue gradient. Two large red arrows point upwards from the map, one over North America and one over Europe/Asia, highlighting growth in those regions.

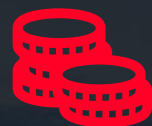
140%
Group's Revenue Growing (2015-19)

300+%
Int'l Business's Revenue Growing (2018-19)



6

R&D Centers



15%

R&D Reinvestment



5,000 +

Employees



250K +

Channel Partners



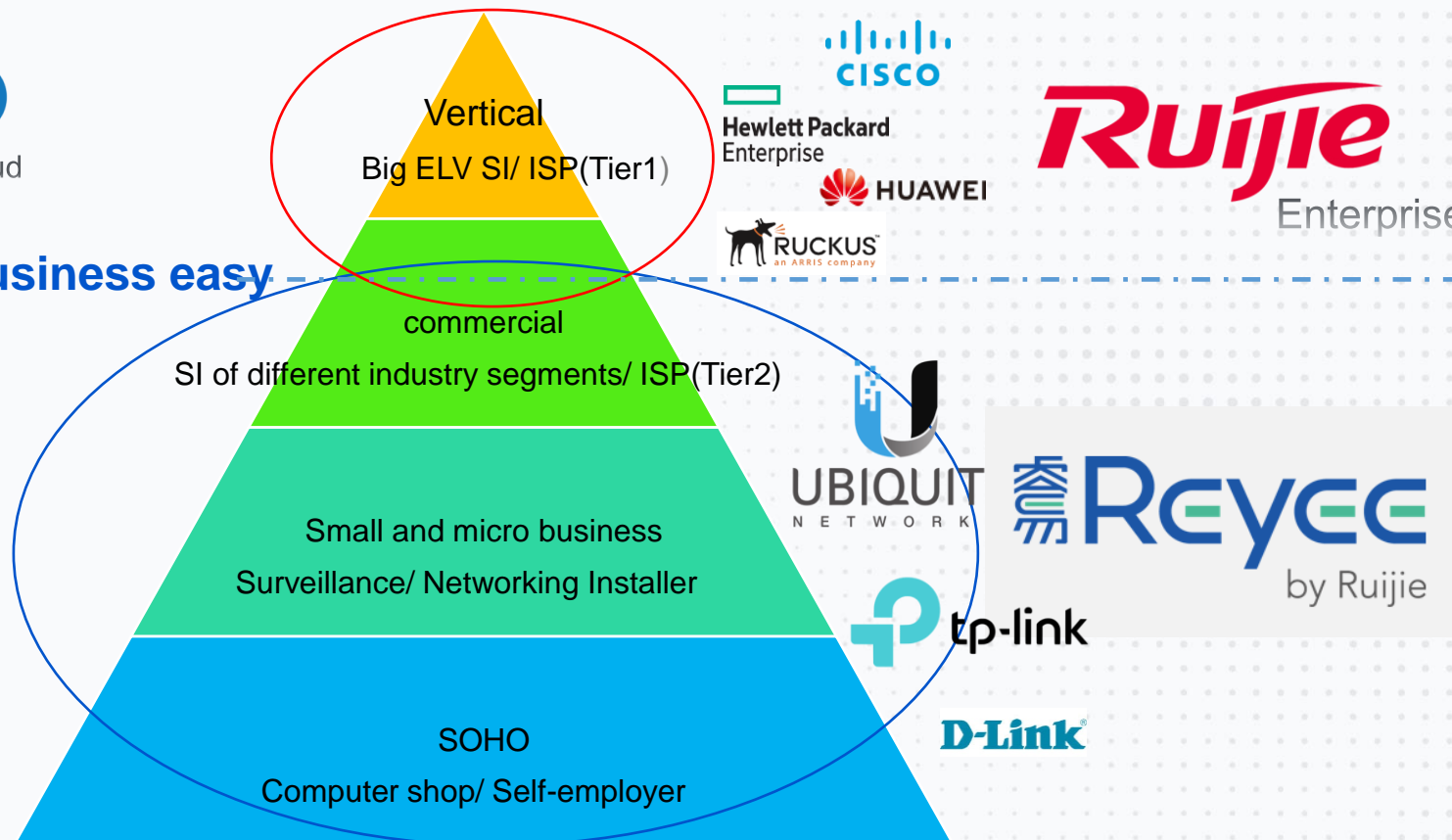
50 +

Countries Coverage

Ruijie Product Strategy 2020



Make your business easy



- Higher performance
- Rich enterprise features
- Enterprise Cloud features
- Competitive price with enterprise brand

- Good performance
- Sufficient practical features
- Self-Organizing Network
- Attractive price with higher cost performance

ONE Cloud Solution | Make Your Business Real-Easy

The ONLY Vendor offering ENTERPRISE Cloud for SME at Lifetime FREE

Ruijie Cloud



Unlimited Capacity
Platform



Enterprise-grade
Features



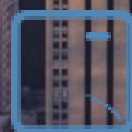
Easy
Maintenance



99.99%
Availability



Since 2014



2 Millions+
Devices



50 Millions+
Users Served



200,000+
App Installed



50+ Countries
Covered

How Ruijie Cloud can help?



Make Your Business Real-Easy

Ruijie Enterprise Family

On-Premises Controller



RG-WS6000 Series

- 224 to 3200 APs
- Radius Integration (Clearpass)



Private Cloud

- Unlimited Capacity
- Authentication Module

Cloud Service



- Unified Device Management
- Cloud Optimization & Analytic
- Reporting & Compliance

Mobile App (Android/iOS)



- FREE to Download
- Mobile Provisioning
- Mobile Inspection & Optimization
- Mobile Monitoring & Alarm

Cloud Managed Switches



RG-S7800C Series Chassis Switches

- 5/8 Slots
- Hot Swappable
- 100G ready



RG-S6120 Series 10G L3 Switches

- Upto 32 10G (SFP+)
- Upto 4 25G & 2 40G
- Power & Fan Redundant

Coming soon



RG-S5750-H Series Full L3 Switches

- Support VSU
- 24SFP options



RG-S29 Series Full Managed Switches

- Support VSU
- 10G uplinks



XS-S1960 Series L2+ Switches

- HPoE (60W)
- Basic L3

Cloud Managed APs

Indoor

Wall Plate

Outdoor



RG-AP840-I

- Wi-Fi 6
- 6 Stream
- 5.2Gbps



RG-AP820-L

- Wi-Fi 6
- Selectable Dual Band
- 2.4Gbps



RG-AP730-L

- Tri-band Wave2
- 2,130Mbps



RG-AP180

- Wi-Fi 6
- 5 GE Port
- IoT Ready



RG-AP680(CD)

- Wi-Fi 6
- IP67
- Integrated Ant.



RG-AP720-L

- Wave2
- 1,167Mbps



RG-AP710

- 11ac
- 1,167Mbps



RG-AP210-L

- 11n
- 300Mbps



RG-AP130(W2)V2

- 11ac Wave2
- Invisible Light Design



RG-AP630(IDA2)

- ac Wave2
- IP67
- Int / Ext Ant.



RG-EG3000 XE

- 8xGE, 8xSFP+, 2x40G
- 1T Storage
- Upto 20,000 Users
- Max 60Gbps Throughput



RG-EG2100-P V2

- Routing/NAT/VPN
- 8xGE (7xPoE)
- FREE Layer 7 DPI
- Upto 300 Users



RG-EG3230 / RG-EG3250

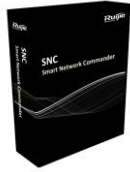
- Routing/NAT/VPN
- 8xGE, 1x10G SFP+
- FREE Layer 7 DPI
- 1T Storage
- Upto 1K/2K Users

WLAN Product Family

Ruijie

Network Management System

RG-SNC Software



Cloud Service

Ruijie Cloud



WIS



PoE Adapter



RG-E-120(GE)
● 802.af



RG-E-130(GE)
● 802.at

Scenario Based Access Point

Ceiling

Wall Plate

Outdoor

Wi-Fi 6



RG-AP840-I

- 6 Stream
- 5.2Gbps
- 1024 Max STA



RG-AP820-L

- 4 Stream
- 1.774Gbps
- BLE 5.0



RG-AP730-L

- Tri-band
- Wave2
- 2,130Mbps



RG-AP720-I

- Smart Antenna
- Wave2
- 1,267Mbps



RG-AP720-L

- Wave2
- MU-MIMO
- 1,167Mbps



RG-AP710

- 11ac Wave1
- 1,167Mbps



RG-AP210-L

- 11n
- 300Mbps

Wi-Fi 6



RG-AP180

- 4 Stream
- 1.77Gbps
- BLE 5.0



RG-AP680 (CD)

- 4 Stream
- 1.77Gbps
- IP 68



RG-AP630(IDA2)

- 11ac Wave2
- IP67
- Int / Ext Ant.



RG-AP130(W2)V2

- 11ac Wave2
- Invisible Light Design



RG-AP110-L

- 11n
- Single band
- Sliding Cover



RG-AP630(IODA)

- 11ac
- IP67
- Int / Ext Ant.



RG-AP630(CD)

- 11ac
- IP67
- Integrated Ant.

SMB



WS6008

- Default 32 AP without license
- Max 224 APs or 448 wall APs
- Support WIS Service



WS6108

- Default 32 AP without license
- Max 320 APs or 640 wall APs
- Support WIS Service



WS6816

- Default 128 AP without license
- Max 3200 APs or 6400 wall APs
- Support WIS Service

Wi-Fi 6 Equipment For All Scenarios: Always One Option Fit For You

Ruijie



RG-AP180

Smart IoT
Wall AP for Hotel

**Universal
Compatible**

5 GE Port

**Light Cover
Design**



RG-AP840-I

IoT AP for
Smart Wi-Fi Project

**5.2Gbps
Throughput**

Max 1024 Clients

IoT Expansion Port



RG-AP820-L(v2)

Highest price-
performance ratio

**2.4Gbps
Throughput**

Max 1024 Clients

**Built-in Bluetooth
5.0**



RG-AP680(CD)

Ideal for
Outdoor (IP68)

**IP68
Weather Proof**

**Integrated
Dir Antenna**

GE Fiber Uplink



The Fastest Wi-Fi 6 in the Market

Ultimate Performance | Visualized Experience



Ruijie

05

Guarantee for Multimedia Streaming Scenarios

Wi-Fi 6 Access Point Multi-Client Video Streaming Performance @1Mbps

Ruijie RG-AP820-L (2x2:2 dual-radio)

- Entry level AP820-L (2x2:2) proven for 300 user video streaming at the same time
- Sufficient for majority scenarios

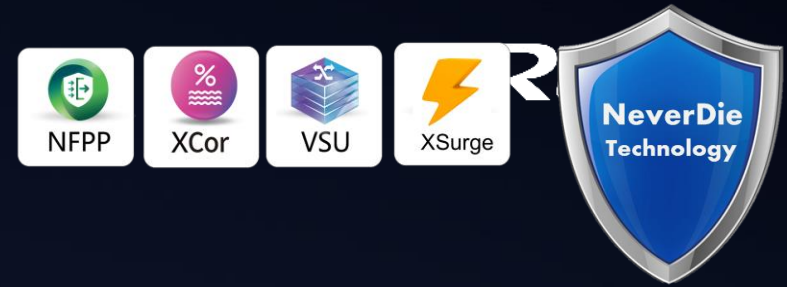
Number of Concurrent Users with Multimedia Streaming

😊 10 User



300 user

Ruijie Switches Family



Enterprise Series

NMS



RG-SNC



Ruijie Cloud

Data Center



RG-N18000-X Series

25/100/400G & VXLAN Ready



RG-S6220-H Series



RG-S6510-48VS8CQ



RG-S6520-64CQ

Core/Distribution



RG-N18000 Series

10/25/40G Ready



RG-S78C Series



RG-S6120-24XS4VS2QXS



RG-S57-H Series

Access



RG-S29XS-E Series



RG-S29 HPoE Series



RG-S29E Series



XS-S1960

1G/10G
PoE & Non-PoE
Cloud MGMT



Guarantee for High Reliability



Ruijie



NFPP



XCor



VSU



XSurge

Upto 67+ Years MTBF

**NFPP, XCor, VSU technology only available for Ruijie Enterprise (RGOS) Switches*

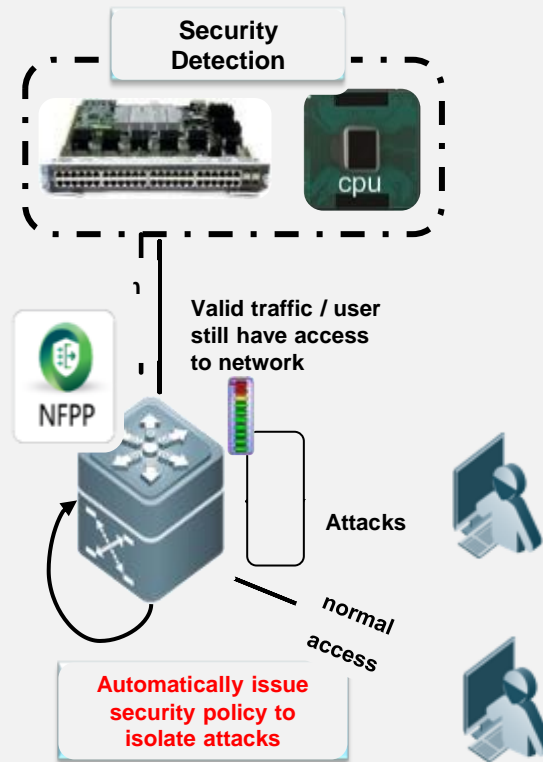
Patented Security Technology



- Security Processing Mode based on network threat
- Automatically discover and prevent security attacks

```
$5750-SiteB(config)#nfpp
$5750-SiteB(config-nfpp)#int g0/1
$5750-SiteB(config-GigabitEthernet 0/1)#nfpp ?

arp-guard      Set ARP guard information
dhcp-guard     Set DHCP guard information
dhcpv6-guard   Set DHCPV6 guard information
icmp-guard     Set ICMP guard information
ip-guard       Set IP guard information
nd-guard       Set ND guard information
```



DEMO WATCHING

YouTube

Ruijie NFPP

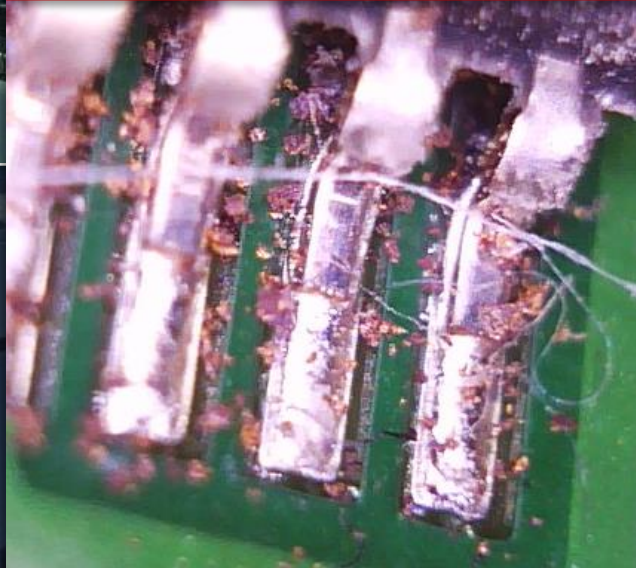


NFPP
Network Foundation Protection Policy

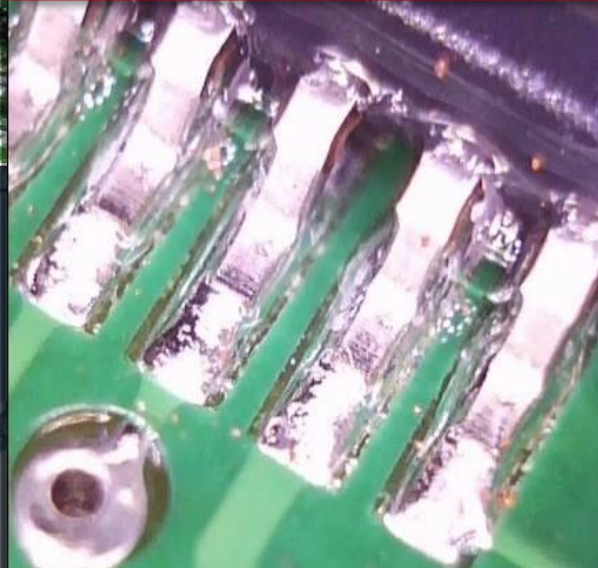
Conformal Coating + Anti-Sulfur Resistors Protection



Without XCor design
for 1 month



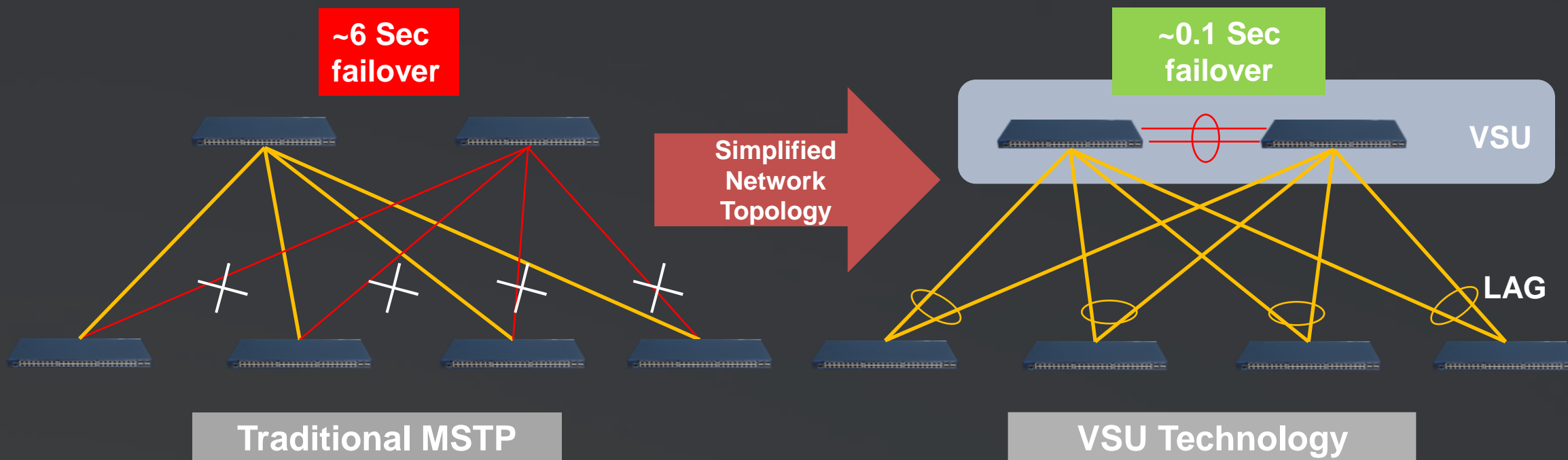
With XCor design
for 2 years



Full Enterprise Switches with
XCor Design & Protection



VSU - Multi-Chassis Link Aggregation



Make complex things simple | Seamless Network Service Failover

- Service failover < 0.1 Sec
- 100% Utilization for ALL Uplink Bandwidth

XSurge Power Protection



Derating design for all components, ensuring universal quality standards for all products

- **Surge Protection**

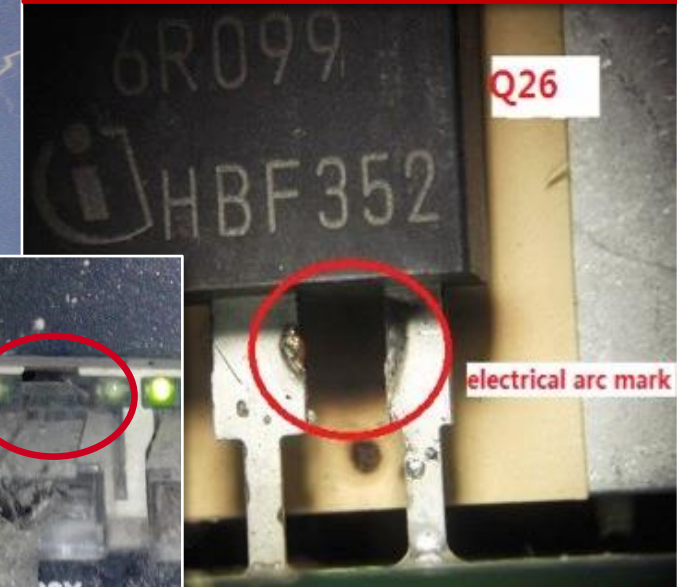
- Max 6 kV** lightening protection for power supply

- Max 8 kV** lightening protection for communication port

- **High Quality Power Supply**

- Operating Temperature from **0 °C to 50 °C**

Damages of the power MOS transistor



Port Failure

EG Security Gateway Product Family



Small Office



RG-EG2100-P v2

Concurrent <300 Users upto 1Gbps

8 1000BASE-T ports (7x POE/POE+) 135Watts
Max

Upto 2 WAN Uplinks

9" Iron Case

Mobile APP Provisioning

Scenarios :
Small Hotel, SMB Office, Retail Chain Store

Medium Campus



RG-EG3230
RG-EG3250

Concurrent <2.000 Users upto 6Gbps

8 1000BASE-T, 1 SFP , 1 SFP+ port (non-combo)

Upto 6 WAN Uplinks

1U rackmount model

1T HDD for user access logging and Mobile APP
APK caching (included)

Scenarios :
K12, Boutique/3-4Stars Hotel/Head Office

Big Campus



RG-EG3000XE

Concurrent <20.000 Users Upto 60Gbps

8 GE combo, 8 10G SFP+, 2 40G QSFP+ ports

Dual power input Redundancy

2U rackmount model

1T HDD for user access logging and Mobile APP
APK caching (sold separately)

Scenarios :
University, Sport Stadium, Convention Center

**Typical Throughput with Basic Features Enabled including NAT, IPSec, Anti-DDoS, Flow Control, Session Control, DHCP Server, Internet Audit)
The actual project needs to be considered in combination with other factors. Please consult your local Sales Representative.*

Multi-Service Security Gateway



Ruijie **EG** Next-generation Unified **Security** Gateway is a multi-functional Cloud Managed Security Gateway for various industries.

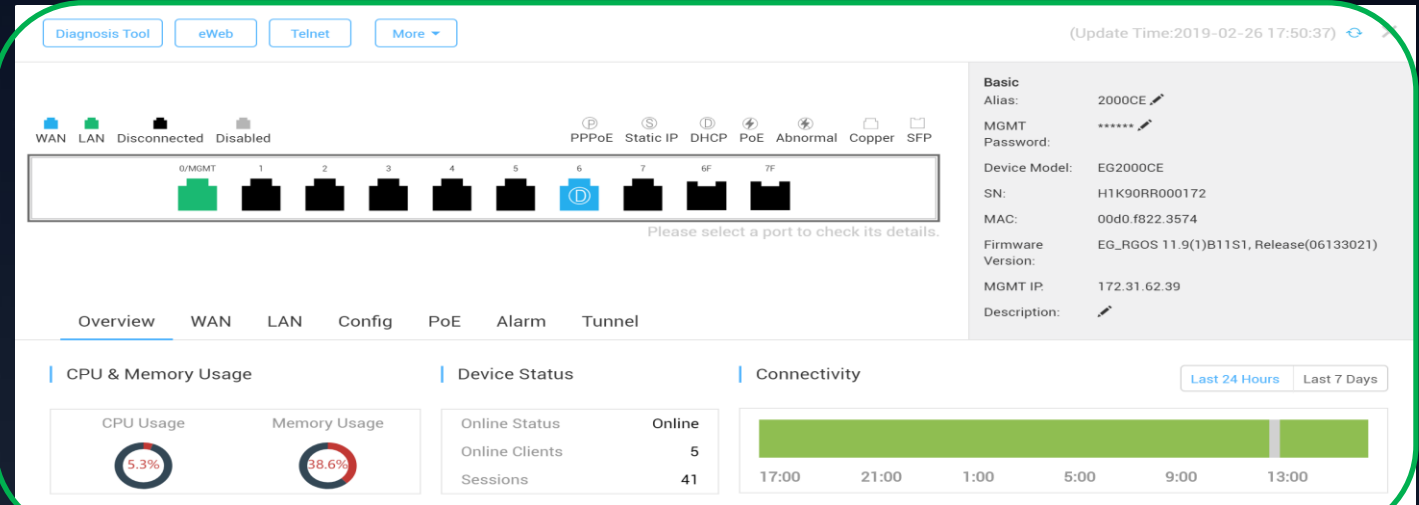


Ruijie EG - Cloud Remote and Monitoring



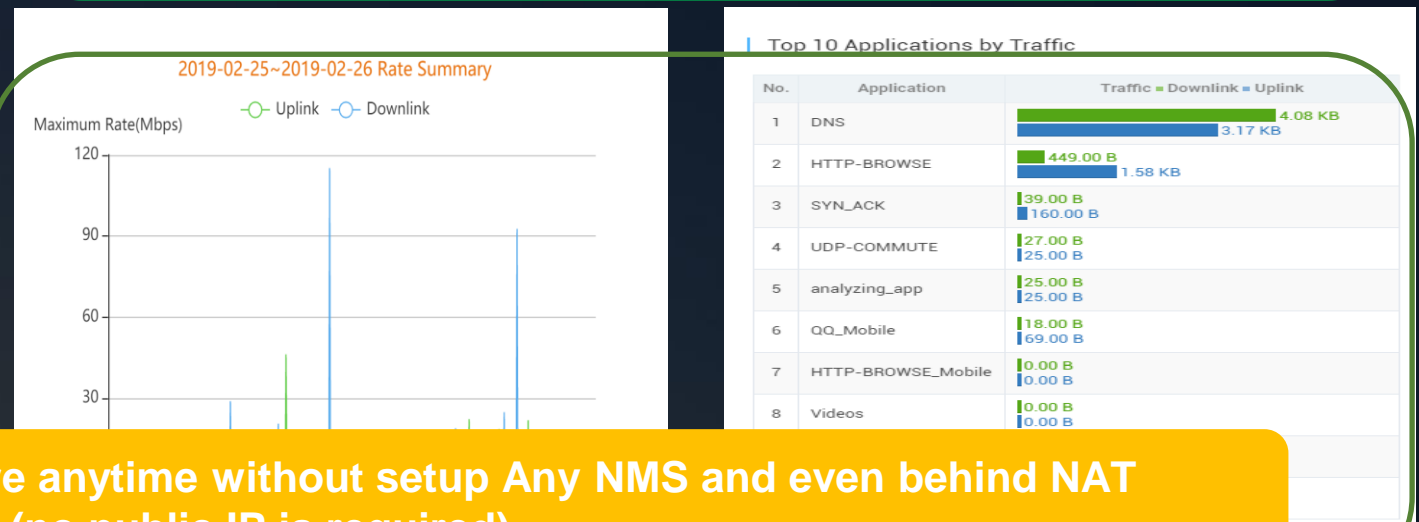
Device Health and Port Monitoring

- CPU, Memory Usage
- Devices Status
- Connectivity logs
- Secured tunnel remote access (Telnet, Web, Web CLI)



Traffic and Top10 Application monitoring

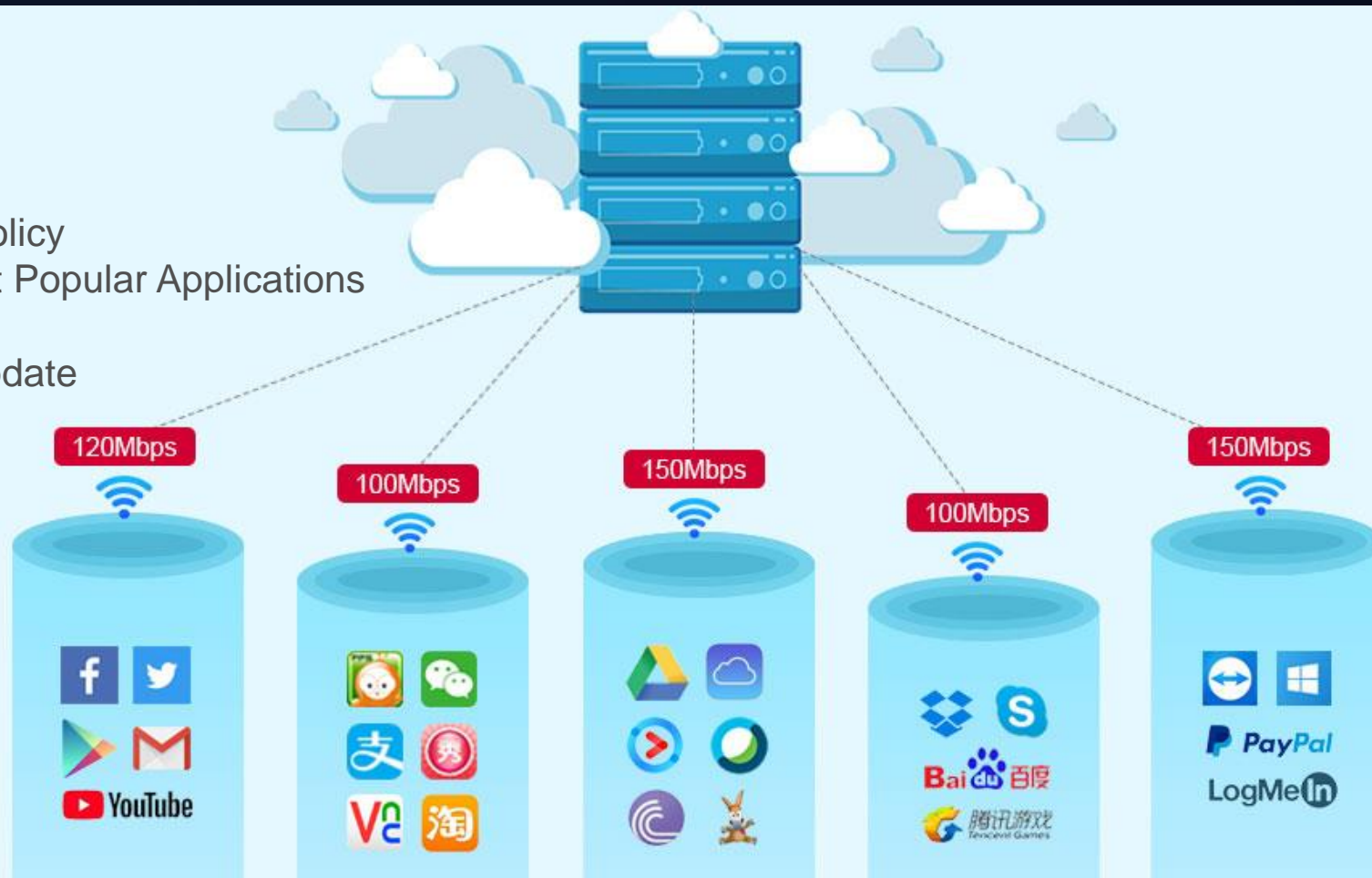
- Upload/download WAN traffic Mbps log
- Top 10 Internet L7 Application with traffic monitoring



EG can be monitored anywhere anytime without setup Any NMS and even behind NAT (no public IP is required)

L7 Deep Packet Inspection (DPI)

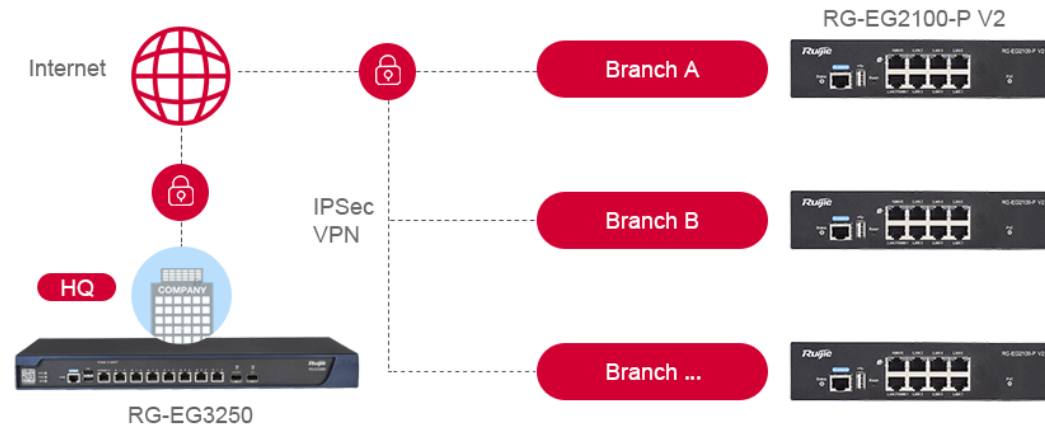
- Easy to apply L7 Filtering Policy
- Over 43 Types, 120 L7 Most Popular Applications
- Less Maintenance
- Lifetime FREE Signature Update



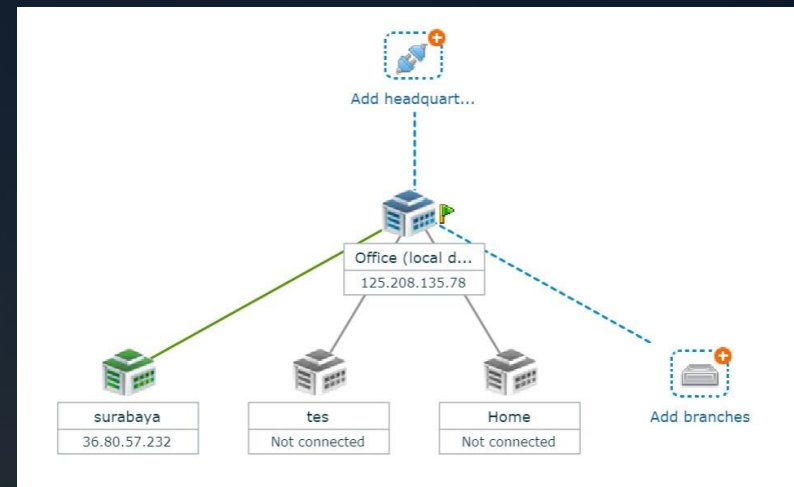
Enterprise IPsec Networking of Headquarters & Branches *Ruijie*

Enterprise VPN *

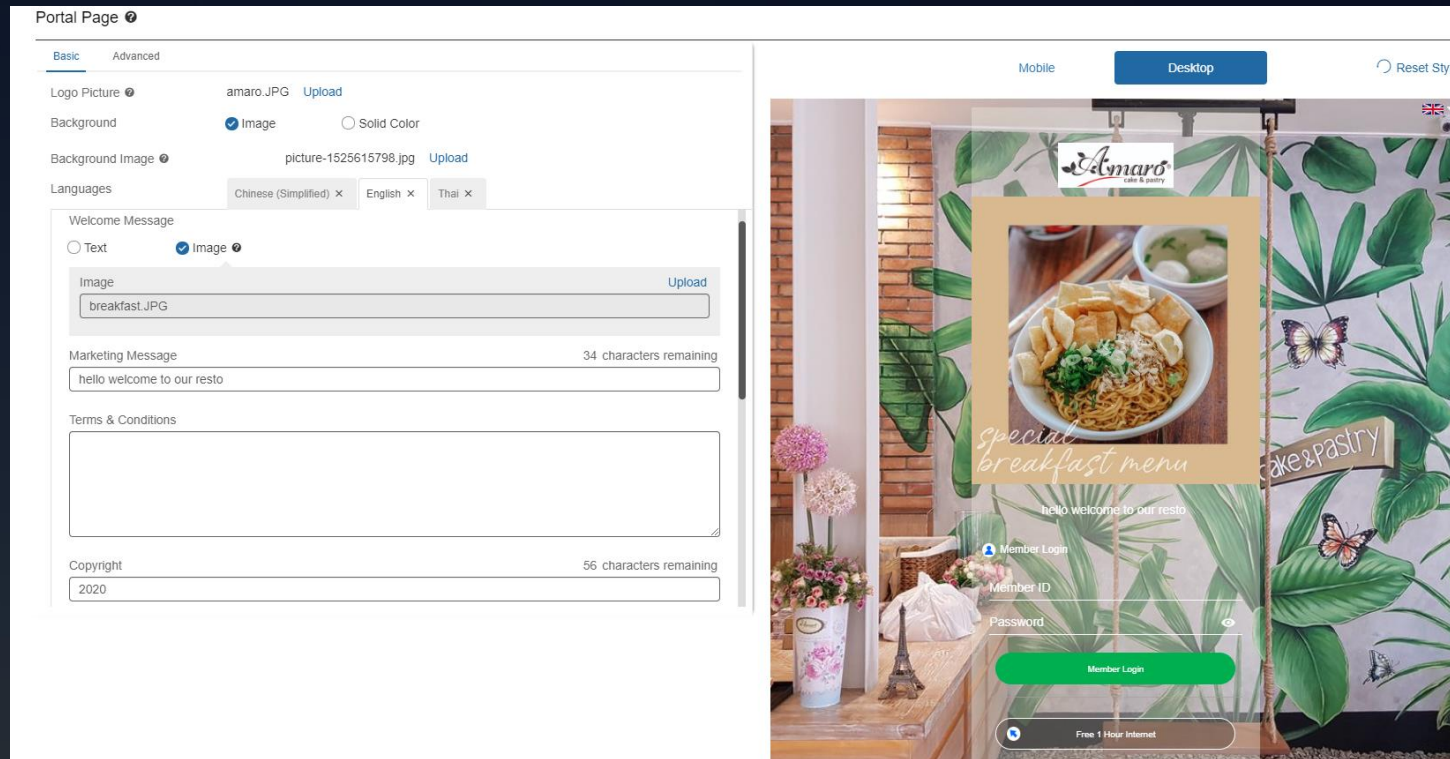
The IPSEC License is FREE with no extra charge.



- Simply to manage **Site to Site** VPN networks (Branches) and Server (HQ) by graphical operation, no need any CLI command works anymore.
- Secured by IPsec VPN encryption end to end
- Upto 2000 IPsec tunnels (with EG3000XE), 256 tunnels (EG3250) 16 tunnels (EG2100P-v2)



Ruijie Cloud Captive Portal Designer for EG



- Very easy to design captive portal like a pro, without any expert HTML knowledge
- Equipped by live editor panel (PC & Mobile View) to preview any changes
- Design portal done by cloud but user auth is processed by local EG

Tailor-made for Industry

Ruijie



No More Wi-Fi Complaint

Hospitality



Marketing Wi-Fi for O2O

Retail Chain



Secure Office DIY

Enterprise Office



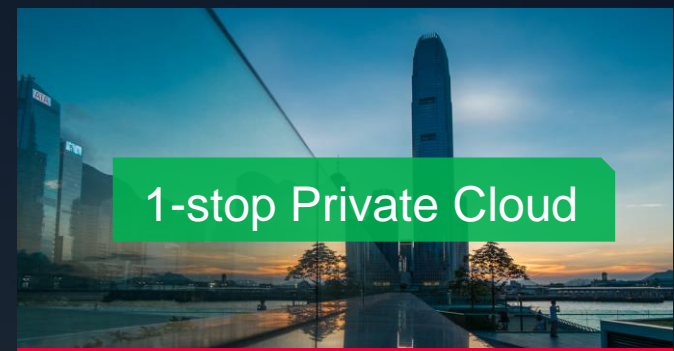
Streamline Wi-Fi Revenue

Staff Accommodation



Role-based Authentication

University / College



1-stop Private Cloud

Government / ISP

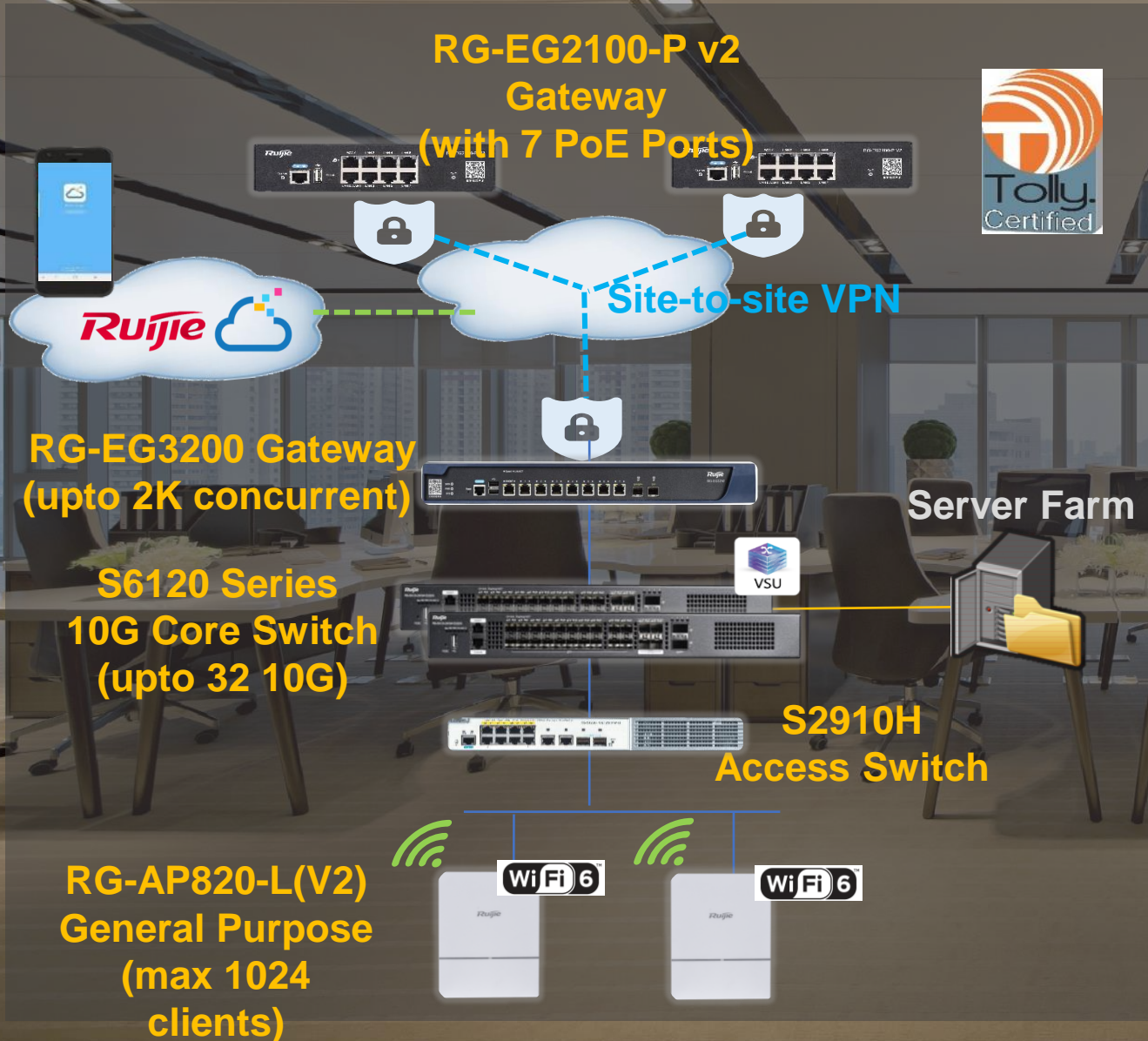
Hybrid Cloud Hospitality Solution

Ruijie



Enterprise Office

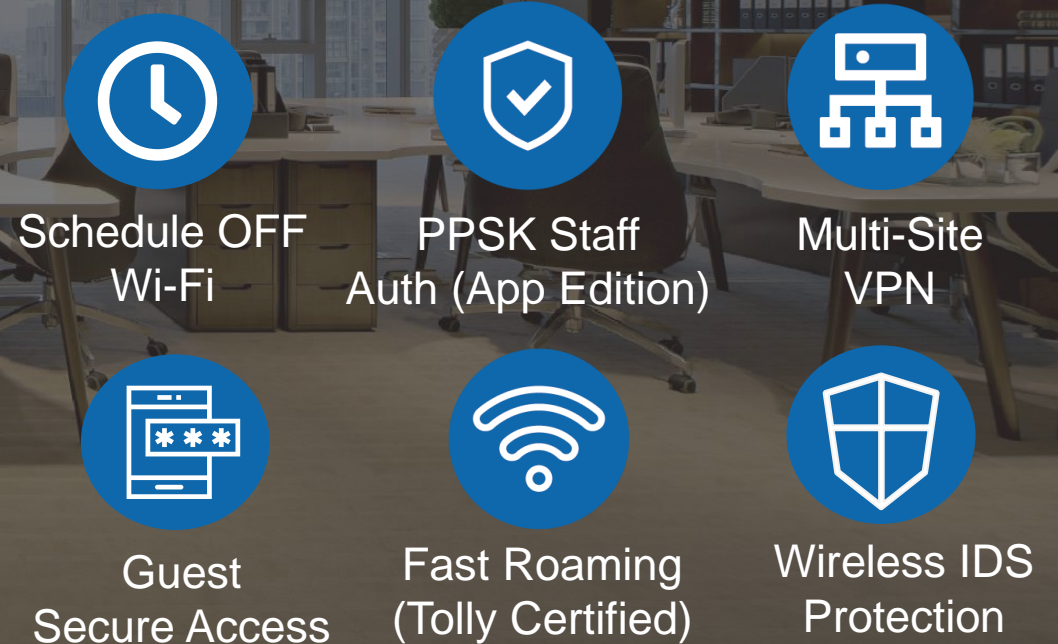
Ultimate WiFi Experience with Enterprise-grade Security



Challenges:

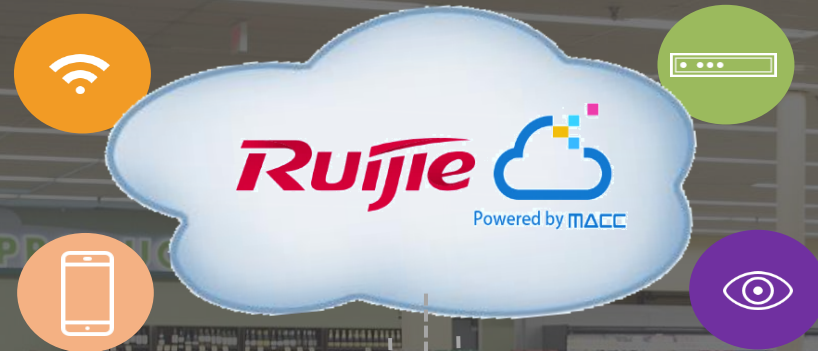
- × Multi-branches network management
- × Wi-Fi password leakage, always need to reset
- × Voice call dropped when moving in office

Our Solutions:



Retail Chain / F&B

FREE Central Cloud Management with Easy Provisioning



WAN Load Balancing (EG)

RG-EG3200 Series
Security Gateway



HQ



VPN



VPN



VPN



Branch
Shops

PoE



RG-AP820-L
(Wi-Fi 6)



Challenges:

- × Site settings changes need to do one by one
- × No budget for Enterprise brand big band
- × Collect guest info for online marketing
- × More ways to promote our hot products

Our Solutions:



FREE Cloud
Management



Secure
Site-to-Site VPN



Marketing
Ads



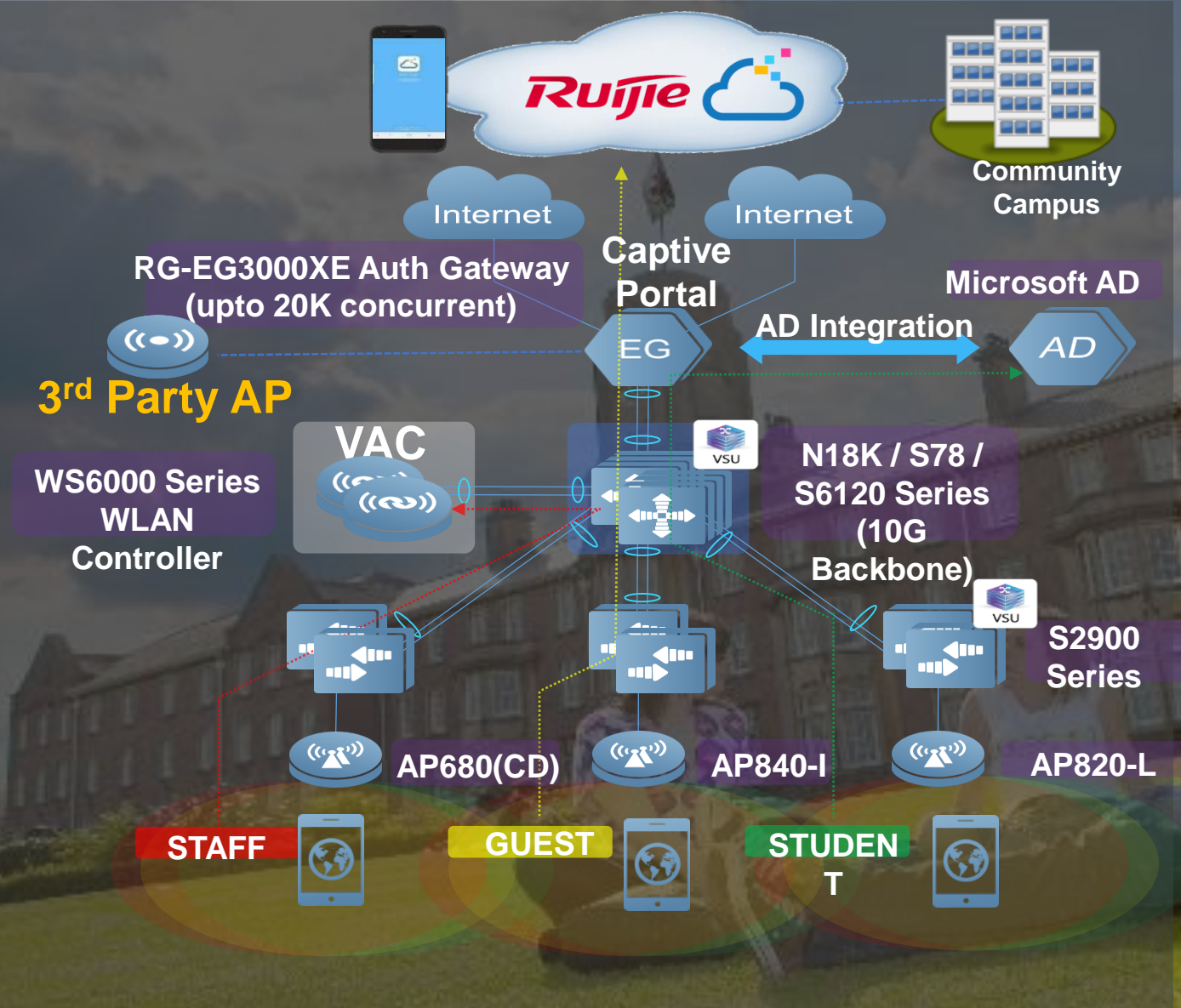
Guest
Hotspot



Multi-site
Seamless Login



POS
Integration



Challenges:

- × Multi-site Campus, lack of IT Support staff
- × Slow internet: Abuse usage (e.g. Video streaming, Windows Patch Update)
- × Multi-brand management, too many security control point
- × Slow captive portal authentication

Our Solutions:



1-click
Optimization



Windows Patch
Caching



3rd Party
Compatible



AC Hybrid
Cloud Mgmt

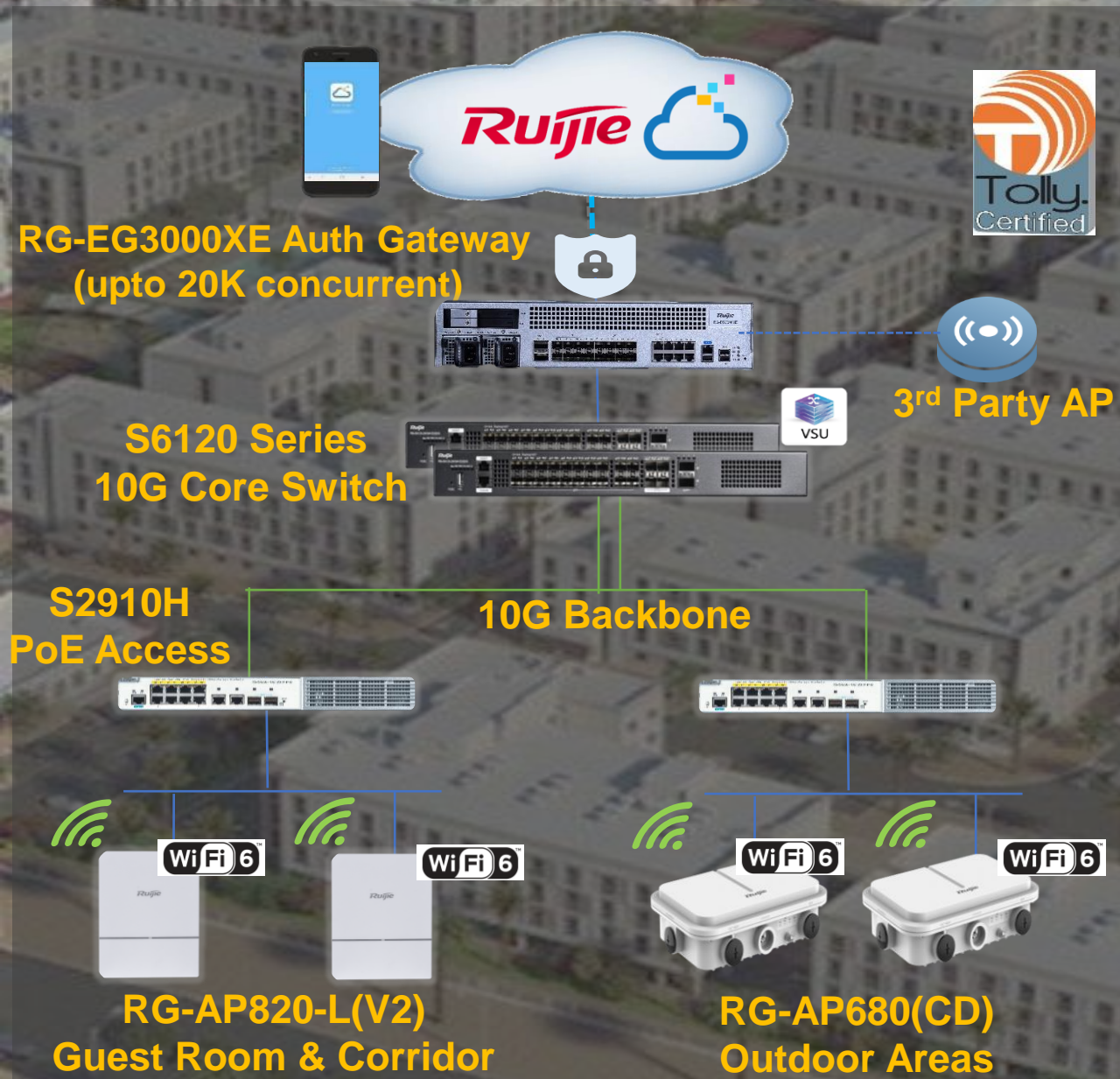


Video Stream
Control



Multi-role
Authentication

Staff Accommodation



Streamline Wi-Fi Revenue & Operation

Challenges:

- Lack of tool to remote site troubleshooting
- Mobile Hotspot sharing impact Wi-Fi revenue
- Low ROI and slow delivery time for Ent. Big brand
- Voucher code printing & operation is complex

Our Solutions:



FREE Cloud Management



1-click Optimization



Easy Voucher



3rd Party AP Compatible



WAN Load Balancing



Rogue AP Prevention



Redefine your easy network

Reyee's Success in China

50%

CAGR for 7
consecutive years

200,000+

Installers are using
Reyee products

3,000+

New projects added on
Ruijie cloud every day

Reyee Product Family

Cloud Service

Ruijie Cloud for Reyee



Self-organizing Network
Real Topology
Delivery Report

Mobile Provisioning
Mobile Monitoring & Alarm
Mobile maintenance Remotely

Switches

Access Point

Routers

Home Wi-Fi

Unmanaged Switch

Cloud Managed Switch

Indoor AP

Wall AP

RG-EG Series

RG-EW Series



RG-ES05/08G

RG-ES100 Series

RG-ES200 Series



RG-RAP2200(F)

RG-RAP2200(E)

RG-RAP1200(F)

RG-RAP1200(P)



RG-EG105G

RG-EG105GW



RG-EW1200G Pro

L2 Smart Gigabit Switch

L2+ Smart Gigabit Switch

Outdoor AP

Outdoor Bridge

RG-EG PoE Series



RG-NBS3100 Series

RG-NBS5100 Series



RG-NBS3200 Series

RG-NBS5200 Series



RG-EAP602



RG-EST310



RG-EST350



RG-EG105G-P



RG-EG210G-P



RG-EW1200

Reyee Wireless Family

Indoor AP



RG-RAP2200(E)



RG-RAP2200(F)

Wall-plate AP



RG-RAP1200(F)



RAP1200(P)

Outdoor Bridge



RG-EST310



RG-EST350

Outdoor AP



RG-EAP602

Cloud Managed Switch Family

Cloud Managed Switch for CCTV



RG-ES205GC-P
4*GE(POE+) + 1*GE,
54W Output



RG-ES209GC-P
8*GE(POE+) + 1*GE,
120W Output



RG-ES218GC-P
16*GE(POE+) + 2*SFP, 240W Output



RG-ES226GC-P
24*GE(POE+) + 2*SFP, 370W Output



RG-ES216GC
16*GE, Non-POE



RG-ES224GC 24*GE, Non-POE

L2 Managed Switch



RG-NBS3200-24SFP/8GT4XS
24*SFP + 8*GE Combo + 4***10G** SFP+



RG-NBS3200-24GT4XS
RG-NBS3200-24GT4XS-P
24*GE + 4***10G** SFP+, 370W Output



RG-NBS3200-48GT4XS
RG-NBS3200-48GT4XS-P
48*GE + 4***10G** SFP+, 370W Output



RG-NBS3100-8GT2SFP
RG-NBS3100-8GT2SFP-P
8*GE + 2*SFP, 125W Output



RG-NBS3100-24GT4SFP
RG-NBS3100-24GT4SFP-P
24*GE + 4*SFP, 370W Output

L2+ Managed Switch



RG-NBS5200-24SFP/8GT4XS
24*SFP + 8*GE Combo + 4***10G SFP+**



RG-NBS5200-48GT4XS
48*GE + 4***10G SFP+**



RG-NBS5200-24GT4XS
24*GE + 4***10G SFP+**



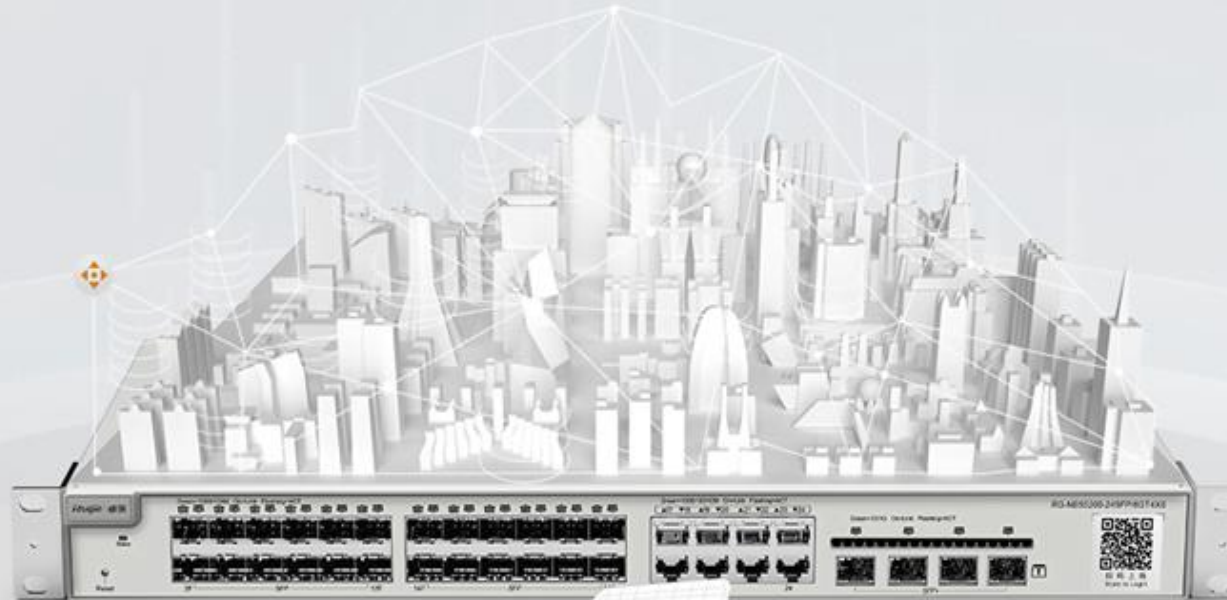
RG-NBS5100-48GT4SFP
48*GE + 4*SFP



RG-NBS5100-24GT4SFP
24*GE + 4*SFP

Cloud Managed Switch

Put Network Into Your Phone



Self-organizing
Network



NVR/Camera
Recognition



Configure VLAN
By Mobile Phone



Monitoring
by Mobile



Real-Time
Alarm



Port Reboot
Remotely

Reyee Easy Router—— Small and Powerful



Network Management



Enterprise VPN



Flow Control



Multiple WAN



Enterprise Security



AC Mode



RG-EG105G



RG-EG105GW



RG-EG105G-P



RG-EG210G-P

Concurrent Terminals

100

200

Downlink Bandwidth

500Mbps

600Mbps

July

Sept.

July

July



Villa



Hotel



Small office



Restaurant



Shop

EW1200G PRO Introduction



Highlight Features

- Full Gigabit Ethernet ports
- supports 802.11ac Wave2 MU-MIMO, MU-MIMO allows the device to transmit data to multiple terminals concurrently
- Reye Mesh Technology , Enables Zero-configuration Networking for Multiple Devices.
- Wi-Fi Acceleration Mode, thereby reducing game delays
- Ruijie Cloud management, support manage device remotely by mobile APP.

Specifications	
Wireless specifications	2.4GHz 2*2: maximum rate 400Mbps; 5GHz 2*2: maximum rate 867Mbps
	Antenna: External 6dBi omnidirectional antennas
	Support 802.11a/b/g/n/ac/ac Wave2, MU-MIMO
	Frequency band: Independent 2.4GHz and 5GHz modules, supporting dual frequency integration
	Support beamforming
Ports	Wi-Fi channel: 2.4GHz :2.4G~2.4835GHz 5GHz : 5.150~5.250GHz, 5.725~5.850GHz(Country Specific)
	1 10/100/1000M WAN port (Auto MDI/MDIX)
	3 10/100/1000M LAN ports (Auto MDI/MDIX)
	1 blue system LED indicator, 4 network port LED indicators
	1 device pairing/factory reset button
	1 power input interface
Physical specifications	Dimensions: 220x140x36mm (W×D×H, excluding antennas)
	Weight: 0.98kg (entire equipment including packaging)
Power supply	Power specification: DC12V 1.5A
	Maximum power: <10W
Certification	CE, RoHS, FCC
Operating environment	Operating temperature: 0-45°C Storage temperature: -40-70°C

Product Introduction

AC1200 dual-band wireless home router

- Dual-band 1167Mbps 867+ 300
- 4 Megabit Ethernet ports including 1WAN+3LAN
- External 5dBi omnidirectional antennas
- supports 802.11ac Wave2 MU-MIMO, MU-MIMO allows the device to transmit data to multiple terminals concurrently
- Reyee Mesh Technology , Enables Zero-configuration Networking Solutions for add-on Devices.
- Ruijie Cloud management, support manage device remotely by mobile APP.



RG-EW1200

Highlight Features

- supports 802.11ac Wave2 MU-MIMO, MU-MIMO allows the device to transmit data to multiple terminals concurrently
- Reyee Mesh Technology , Enables Zero-configuration Networking for Multiple Devices.
- Ruijie Cloud management, support manage device remotely by mobile APP.
- Working temp: -10° C~45° C, endure the worse operation condition.

Enable Reyee Mesh, Enjoy Mix & Match

Up to your budget, Choose the home Wi-Fi solution confident



Large size house (All PRO)

Full Gigabit ports, optimized signal, enterprise grade performance and cover all types of home you loved.

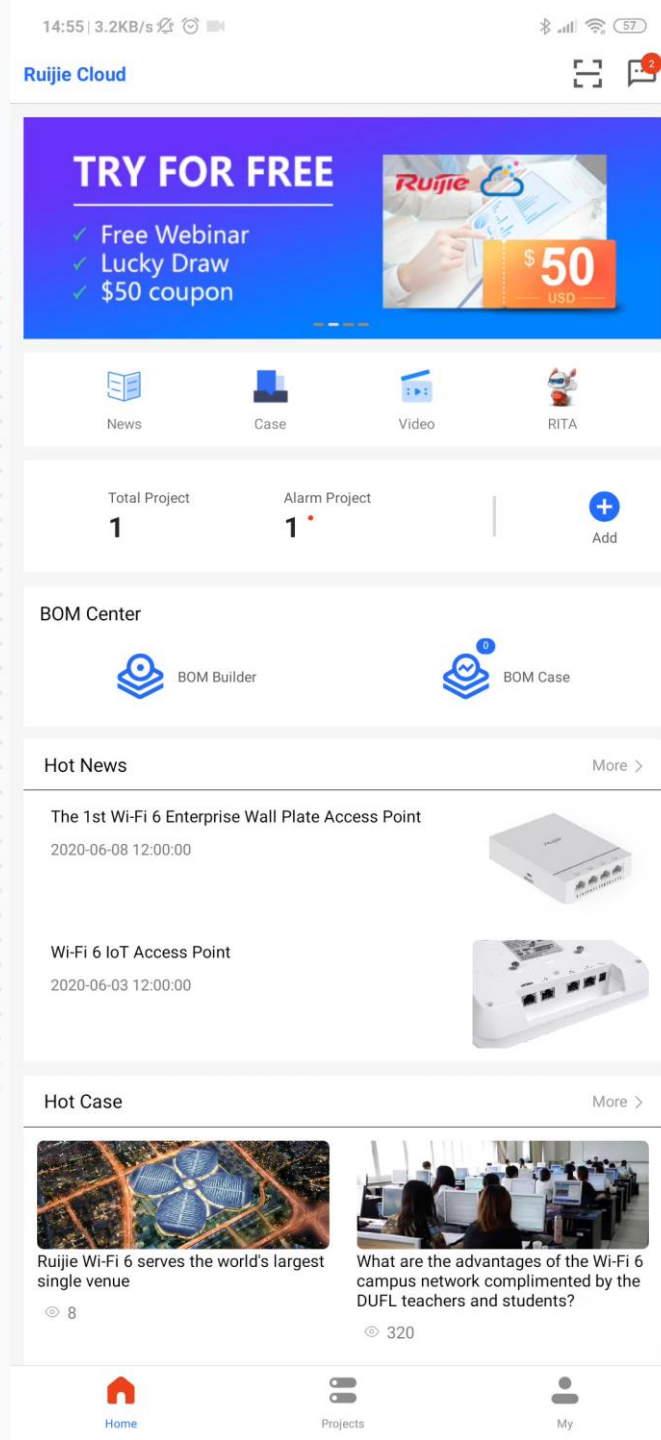
Modern residence (PRO+1200)

Keep Gigabit wideband but in low budget, make balance between the performance and cost, match perfectly for modern family.

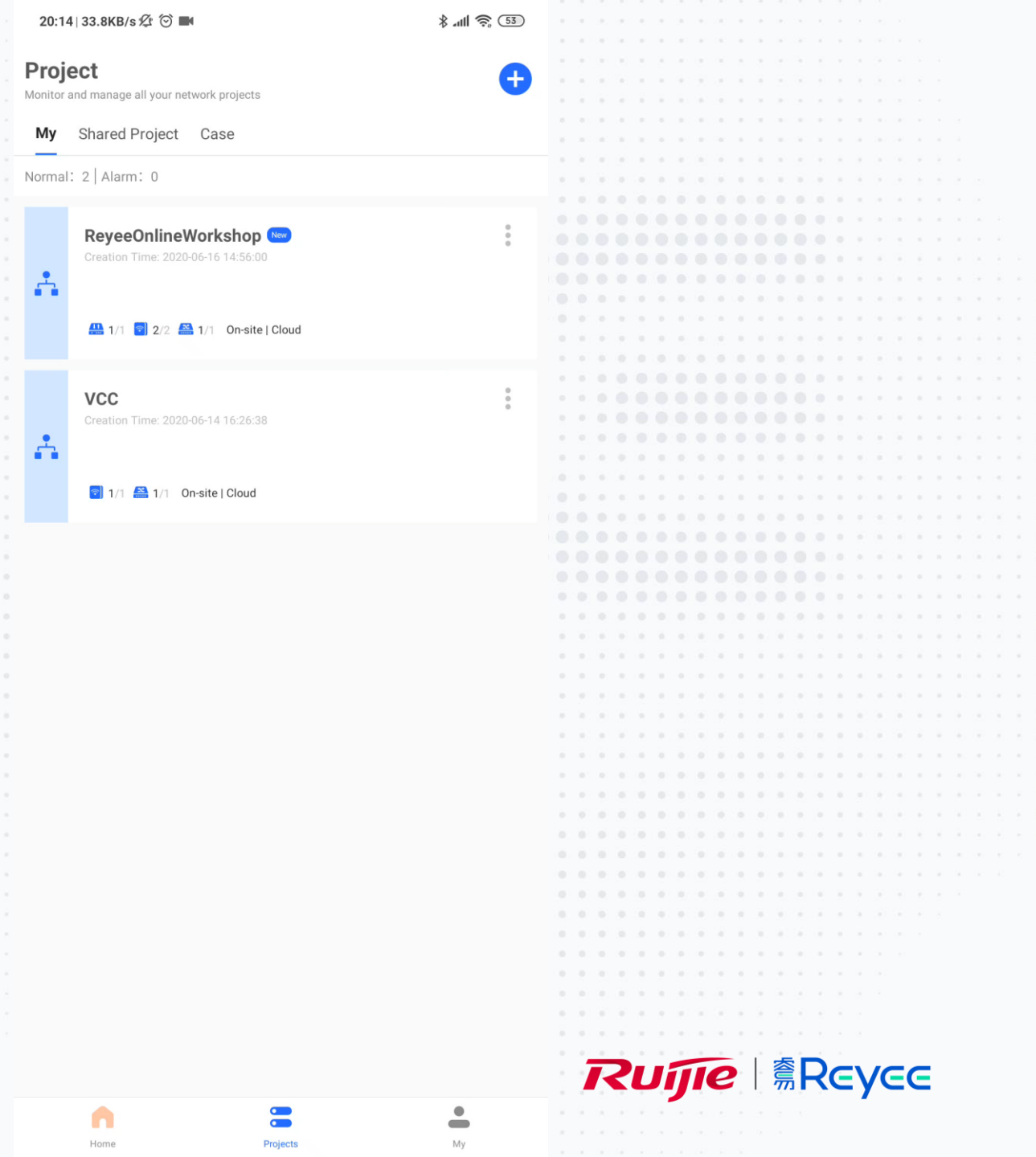
Economics (All EW1200)

Minimum spending to get better whole home Wi-Fi solution, especially a killer solution for home only has megabit speed access rate but want to full-coverage of internet.

Self-Organizing Network

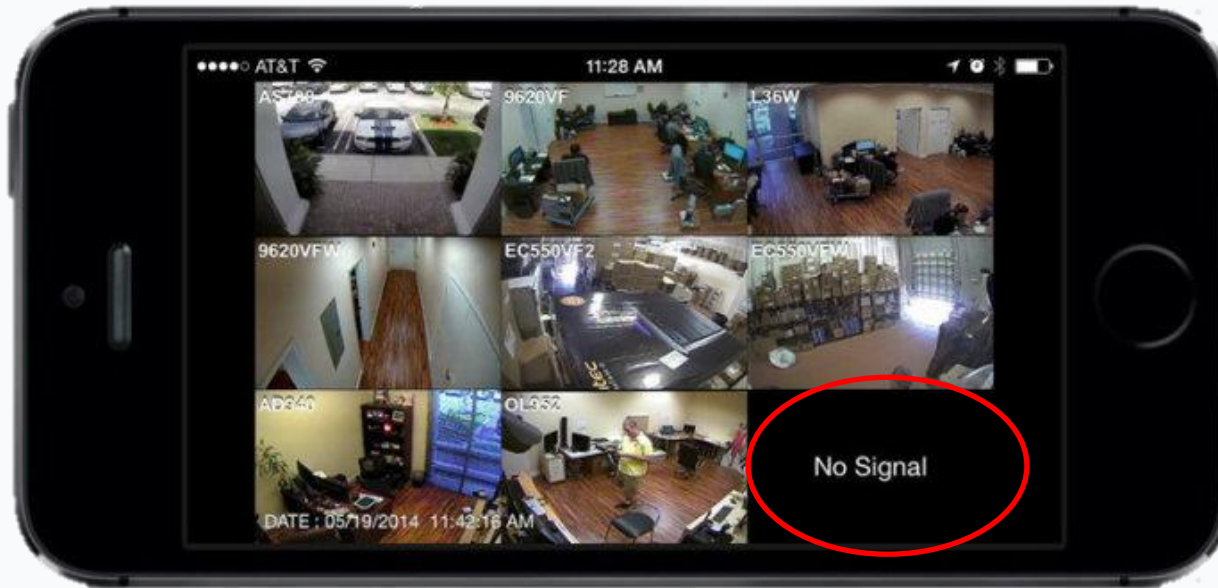


Real Topology



Remote Reboot Helper

75% of IP camera failure can be solved with a simple
Not the WHOLE switch, but a dedicated port for a PoE



Now you can solve these 75% problems by
PoE power down then up to the port

ES205C-P Online

MAC: 300d.9e8b.4365
IP: 192.168.110.39
Firmware Version: ESW_1.0(1)B1P2,Release(07172221)
SN: CAP30VV002376

Uplink Port Speed(Mbps)		PoE Power (W)	
0.026 Uplink	0.341 Downlink	7.0 Used	47 Available

Alarm Record

Interface(1 ~ 5) [? Help](#)

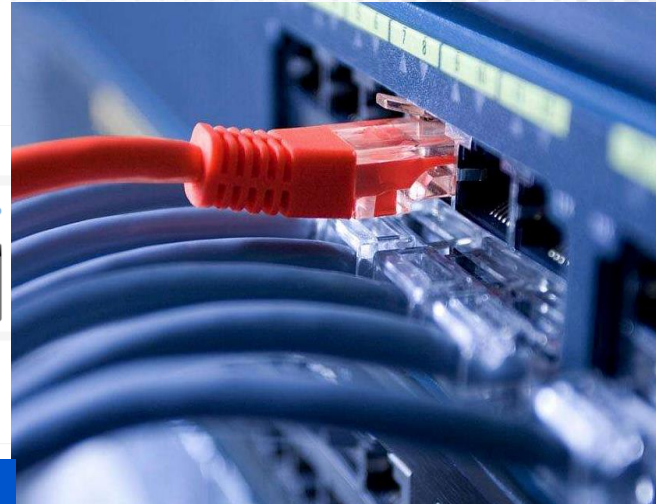
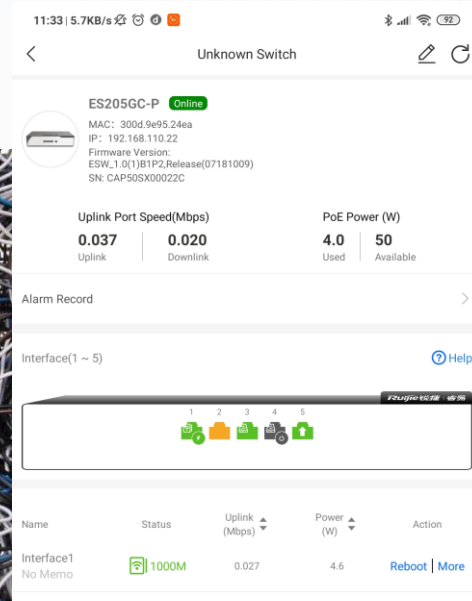
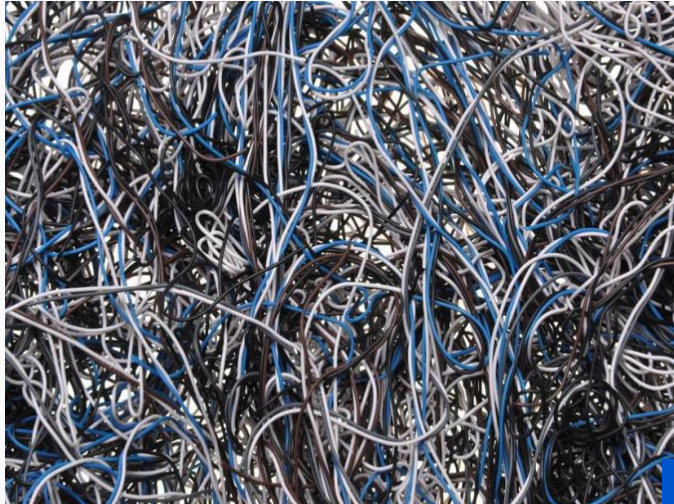
Name	Status	Uplink (Mbps)	Power (W)	Action
Interface1 No Memo	Disabled	0	0.0	Reboot More
Interface2 No Memo	Disabled	0	0.0	Reboot More
Interface3 No Memo	100M	0.015	3.0	Reboot More
Interface4 No Memo	100M	0.010	4.5	Reboot More
Interface5 No Memo	100M	0.026	0	Reboot More



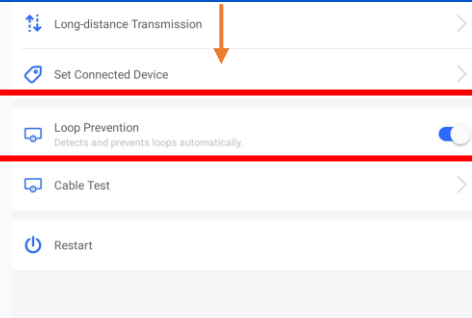
Remote Reboot Helper

Loop Prevention

One tiny error of connection, one **HUGE** disaster for total network.



Loop Prevention is enabled



Loop Prevention

The image is a composite illustrating a network loop prevention scenario. It features a Windows desktop environment with several open windows and a background image of a sunset over water with boats.

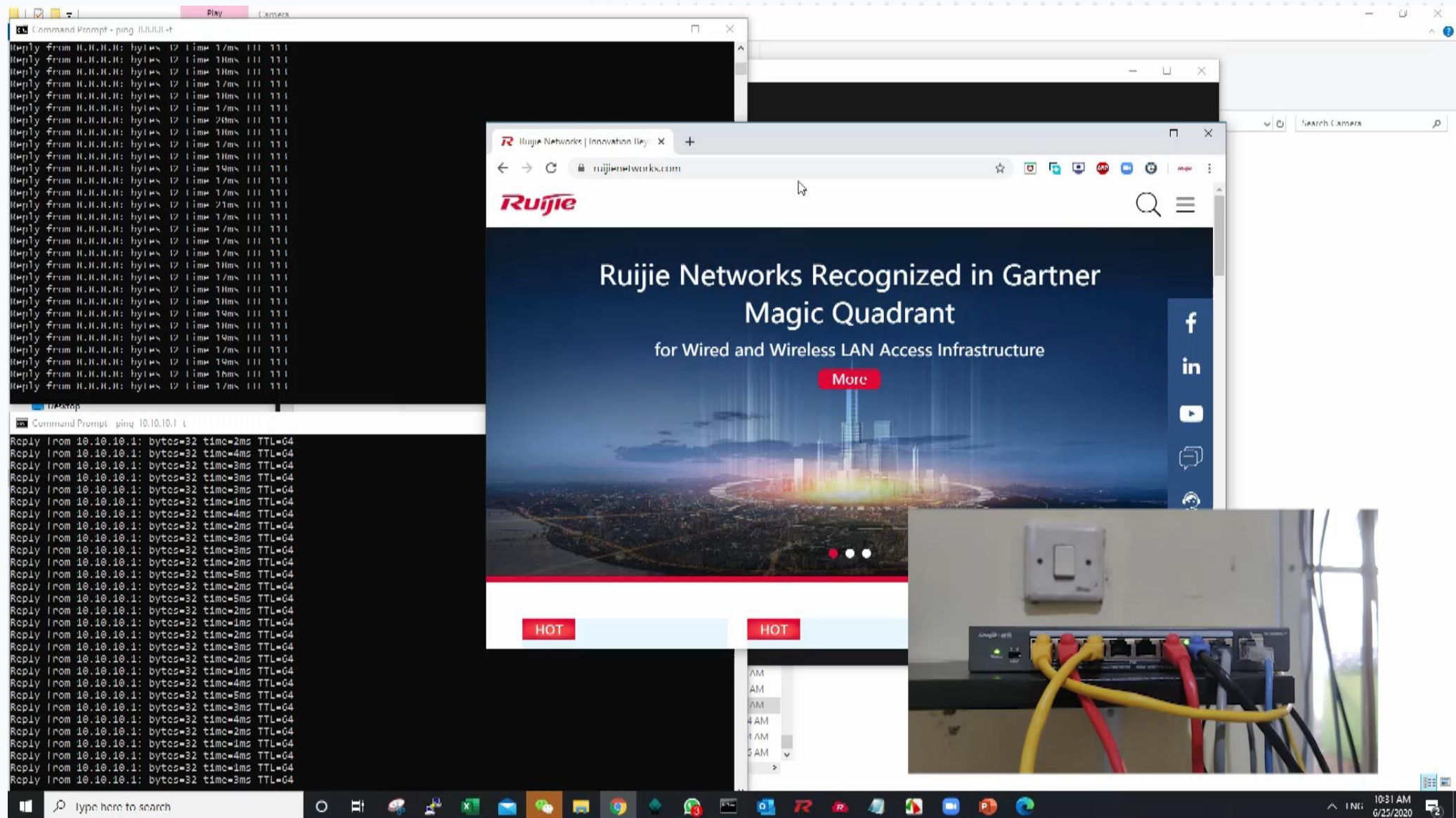
Terminal Window (Command Prompt): Shows a continuous loop of ping commands to 10.10.10.1. The output for each ping is: `Reply from 10.10.10.1: bytes=32 time=3ms TTL=64`. This indicates a successful but potentially redundant connection.

Browser Window (detik.com): Displays the detik.com homepage. The address bar shows `detik.com`. The page content includes the detik.com logo, navigation links (detikNews, detikFinance, etc.), and various news articles.

Network Hardware: A photograph of a network switch or router with multiple ports. Several yellow and red Ethernet cables are plugged into the ports, suggesting a complex network configuration.

Background Image: A scenic view of a sunset over a body of water with several small boats, likely a harbor or a lake.

Loop Prevention



Professional Hand-over Report

1 Minute
generation



How could we hand over projects to end-user previously?



What is the procedure when we hand over projects?



How to provide professional validation reports to clients?



Profession
Report

Mobile
+
Cloud
Share

THANKS!

